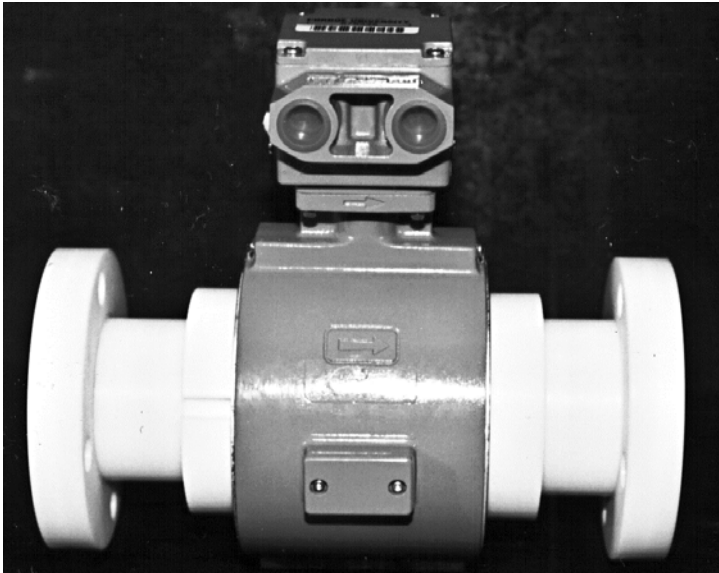


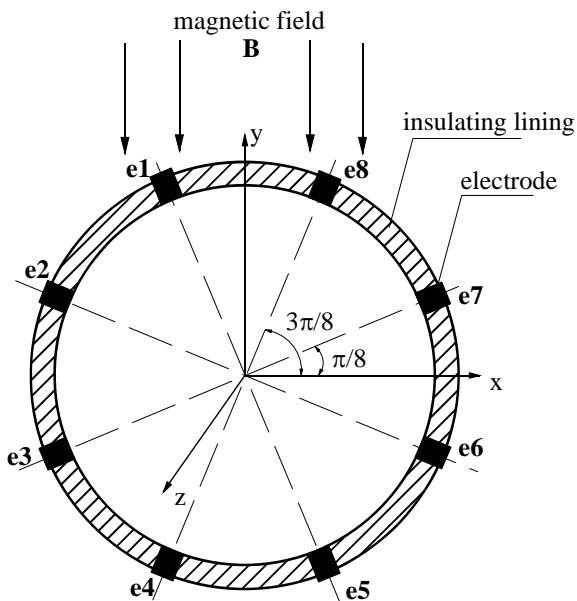
## Multi-Electrode Magnetic Flow Sensor

*MEMF is a multi-electrode electromagnetic flow meter capable of obtaining the area-averaged liquid velocity of multiphase flow.*



FROM **EN'URGA INC.**  
*innovations in quality control*

MEMF, developed under a Department of Energy grant by En'Urga Inc., is a useful tool that can be used for non-intrusively monitoring multiphase flow. The innovative flow sensor is based on solid theoretical analysis and state-of-the-art flow measurement technologies. The En'Urga MEMF is fast, inexpensive, suitable for small pipes or large vessels, and does not involve safety restraints. It can be used for multiphase flow measurements which are routinely required for process monitoring and operational control in a variety of industries, such as petroleum, chemical, food, pharmaceutical, power, water and wastewater and nuclear industries.



*Sensor of the MEMF*

### **Specifications** >>>>>

- ◆ Accuracy: < 10% for finely dispersed multiphase flow with void fraction up to 30 %.
- ◆ Lowest velocity: 10% of max. range
- ◆ Sampling rate: 1 kHz
- ◆ Minimum pipe size: 25 mm
- ◆ Sensor length: 300 mm long

