

SETscan® allows detailed visual and numerical characterization of spray quality in terms of cone angle, asymmetry, streaks, voids and patternation number.



# SETscan™

High Frequency Optical Patternator

## What SETscan® can do for you

### Why the SETscan patternator?

- More reliable and accurate than competitive technology
- The fastest and easiest patternator to operate in the market
- Guaranteed reproducible results

### ROI implications

- Faster nozzle testing
- Lower quality-control costs
- Quality pricing strategy for your nozzles

### Marketing implications

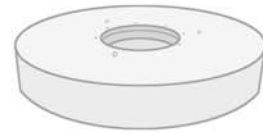
- Strengthen your technology leadership position
- Reproducible quality assurance
- Valuable aid for marketing nozzles

### Product quality implications

- Enables on-line inspection
- Traceable and warehoused data
- Quick design verification

### Customer Satisfaction Implications

- Nozzle quality assurance
- Product usage optimization
- Enhanced services



Specifications	OP-400
Maximum radial resolution	0.4mm
Maximum angular resolution	5 degrees
Power Input	120/230 VAC, 50/60Hz, 5.5W
Maximum diameter of spray	4 inches
Patternation frequency	1000Hz/4000Hz
Weight	150 lbs
Dimensions	diameter: 48" height: 5"



En'Urga Inc.

OP-400

En'Urga Inc. 1291-A Cumberland Avenue, West Lafayette, IN 47906 | Phone: 765-497-3269 Toll Free: 1-877-825-6100 | Fax: 765-463-7004

www.enurga.com

innovations in quality control





Study fuel surface area contours in combustors



Generate contour maps of drop surface area per unit volume in aircraft engines



Evaluate spray efficiency in agricultural nozzles

OP-400

The SETscan® is a high frequency Statistical Extinction Tomography based optical patternator used for on-line quality control of spray nozzles. Its reliability, accuracy, speed and ease of operation make the SETscan® the ideal choice for optical patternation.

## Patternation at its simplest

### Why the SETscan patternator?

- More reliable and accurate than competitive technology
- The fastest and easiest patternator to operate in the market
- Guaranteed reproducible results

### ROI implications

- Faster nozzle testing
- Lower quality-control costs
- Quality pricing strategy for your nozzles

### Marketing implications

- Strengthen your technology leadership position
- Reproducible quality assurance
- Valuable aid for marketing nozzles

### Product quality implications

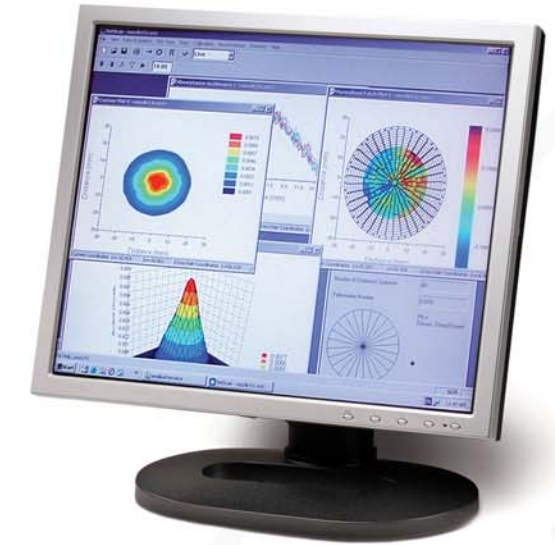
- Enables on-line inspection
- Traceable and warehoused data
- Quick design verification

### Customer Satisfaction Implications

- Nozzle quality assurance
- Product usage optimization
- Enhanced services

### Features

- Out-of-box deployment capability
- No factory floor setup required
- Mountable in any orientation
- Easily obtainable patternation results
- Patternation time as low as 250µs
- Insensitive to nozzle center misalignment
- Minimal technical expertise required
- Protection against corrosive liquids
- Immune to factory floor lighting
- Very low maintenance



## Patternation at its best

### Visualization Tools

- Cone angle, asymmetry, streaks, voids and patternation number
- GUI with point and click operation including one click calibration
- Contour plot of drop surface area per unit volume
- Patternation number for user specified pie, linear and area configurations
- Rotatable, 3D plots, transient movies, and data cubes
- Portability of data and graphics to desktop applications

