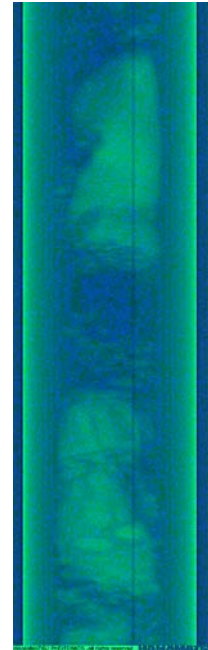
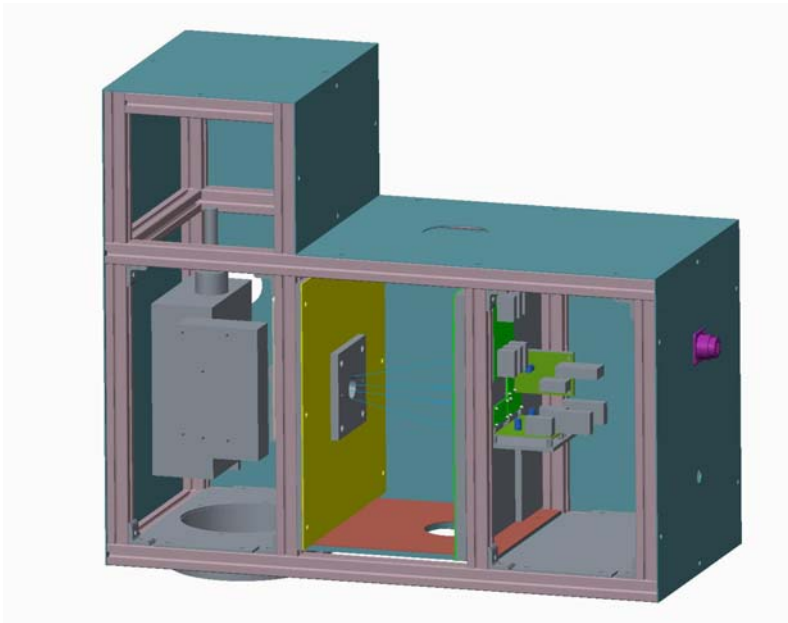


# Two Phase Flowmeter XP200

En'Urga Inc. introduces and X-Ray Void Fraction and Void Fraction Flux Meter based on their innovative Statistical Algorithms



## Features >>>>

- Works with two phase flow
- Void fraction estimated using X-Ray extinction
- Radial velocity profiles estimated using Image Correlation Velocimetry
- Mass flux calculated from independent measurements of void fractions and velocity

## Specifications >>>>

- X-Ray Power: 10 KeV to 50 KeV
- X-Ray current: 1 mA max
- Spatial resolution: 400µm
- Flow diameter: 50 mm
- Input power: 110 KeV
- Frequency: up to 1000 Hz
- GUI: Windows
- Dimension: 26"x23"x12"

\* Patent application on file at USPTO.

Contact [sales@enurga.com](mailto:sales@enurga.com) for quotation  
T: 765-497-3269



**En'Urga Inc.**

*innovations in quality control*